

Ka Waihona Puke 'Ōiwi

NATIVE HAWAIIAN LIBRARY

From the Director's Chair



Aloha Kākou,

I hope you enjoy reading the first in a series of articles, profiling our satellite libraries in Native Hawaiian communities.

We celebrate the formal opening of Ka Waihona Puke 'Ōiwi o Molokai, made possible through a partnership between Queen Lili'uokalani Children's Center-Molokai Unit and ALU LIKE, Inc. Native Hawaiian Library.

By working together to serve Native Hawaiians, we will increase our outreach into the community.

I'd like to borrow a few words from Keaukaha Principal Lehua Veincent with a slight play on words, "We are not a library in a community, we are a community library."

Mahalo Ke Akua, Mahalo Ka Mo'i wahine 'o Lili'uokalani, Mahalo i Ka Po'e o Molokai.

Me ka ha'aha'a,
Keikilani Meyer

More Than A Book Collection

KA WAIHONA PUKE 'ŌIWI O MOLOKAI IS A CURATOR OF IMPORTANT HAWAIIAN HISTORY

Ka Waihona Puke 'Ōiwi o Molokai began with a half-dozen boxes of valuable first-edition books donated by Walter Ritte, well-known Molokai activist, which he received as a gift from Hemp and Calista Merrill of Arizona.

In Friendly Isle fashion, Walter Ritte noticed the historical significance this collection could provide to the people of Hawai'i and approached the Queen Lili'uokalani Children's Center (QLCC) in 2005, with the hopes of preserving and sharing this collection. The creation of the Molokai Native Hawaiian Library began with this Merrill Collection, along with the combined efforts of QLCC and ALU LIKE, Inc.



"The history of our own lives will never be found on a shelf."

This is a special and prized collection because it not only contains many first editions, journals and biographies of the people of Hawai'i, but it also contains the historically important Blount Report.

The Blount Report was conducted by U.S. Commissioner James H. Blount, appointed by U.S. President Grover Cleveland to investigate the January 1893 overthrow of the Hawaiian Kingdom and the administration of Queen Lili'uokalani.



OUR VOICE: FROM SILENCE TO REDISCOVERY

"The Merrill Collection provides personal narratives from individuals whose observations may not normally make it into history books," remarked NHL Librarian Myles Furubayashi.

The two goals of the library are genealogy research and oral history; both of which tell our stories to the next generations. "The shelves are filled with history books to assist us in doing our genealogy work," Library Assistant Faith Horner said. "However, there is one history book that will never be found on the shelves and that is the history of our own personal lives. Hopefully, through oral history efforts, this will be made possible."

"The partnership between QLCC and ALU LIKE, Inc. came together nicely and easily," said QLCC-Molokai Unit Manager Barbara Kalipi. Ka Waihona Puke 'Ōiwi o Molokai provides our community the access to genealogy research and other Hawaiian materials that will help our youth and families, she said.

Library Director Keikilani Meyer further explains, "This is our first library partnership with QLCC, and I hope it's the beginning of more partnerships towards serving our Native Hawaiian communities."

The Molokai Native Hawaiian Library is located at Kūlana 'Ōiwi, 600 Maunaloa Highway, Kaunakakai, Molokai.

The Library hours are Monday and Wednesday 8:00am-12:30 pm; Tuesday and Thursday 1:00pm-4:30pm; Friday 9:00am-12:00pm.

Right: Community leaders observe the Merrill Collection



Special guests (from left): QLCC Trustees Tom Kaulukukui and Dr. Claire Asam with Library Asst. Faith Horner

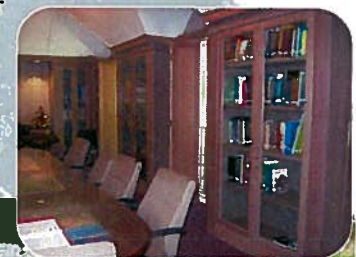


COMMUNITY PARTNER HIGHLIGHT

Mahalo to The Bess Press for donating over 1,500 new books, including Israel Kamakawiwa'ole's biography, *IZ: Voice of the People*. We will distribute these wonderful resources to our keiki, their families and the community. The Bess Press is a local independent publishing company, serving Hawai'i and the Pacific since 1979.

KA WAIHONA PUKE 'ŌIWI

LAYOUT / DESIGNRONNIE HEE



The ho'omaika'i program included a ho'okupu and mele during the Library Open House on April 30

Our purpose is to kokua Native Hawaiians with access to information and to provide materials and services that foster reading and lifelong learning.

Hours of Operation: Mon-Fri 8:00am - 4:30pm • Central Office: 458 Keawe St., Honolulu, HI 96813 • (808) 535-6700